

ExxonMobil Lubricants & Specialties
3225 Gallows Road
Fairfax, VA 22037

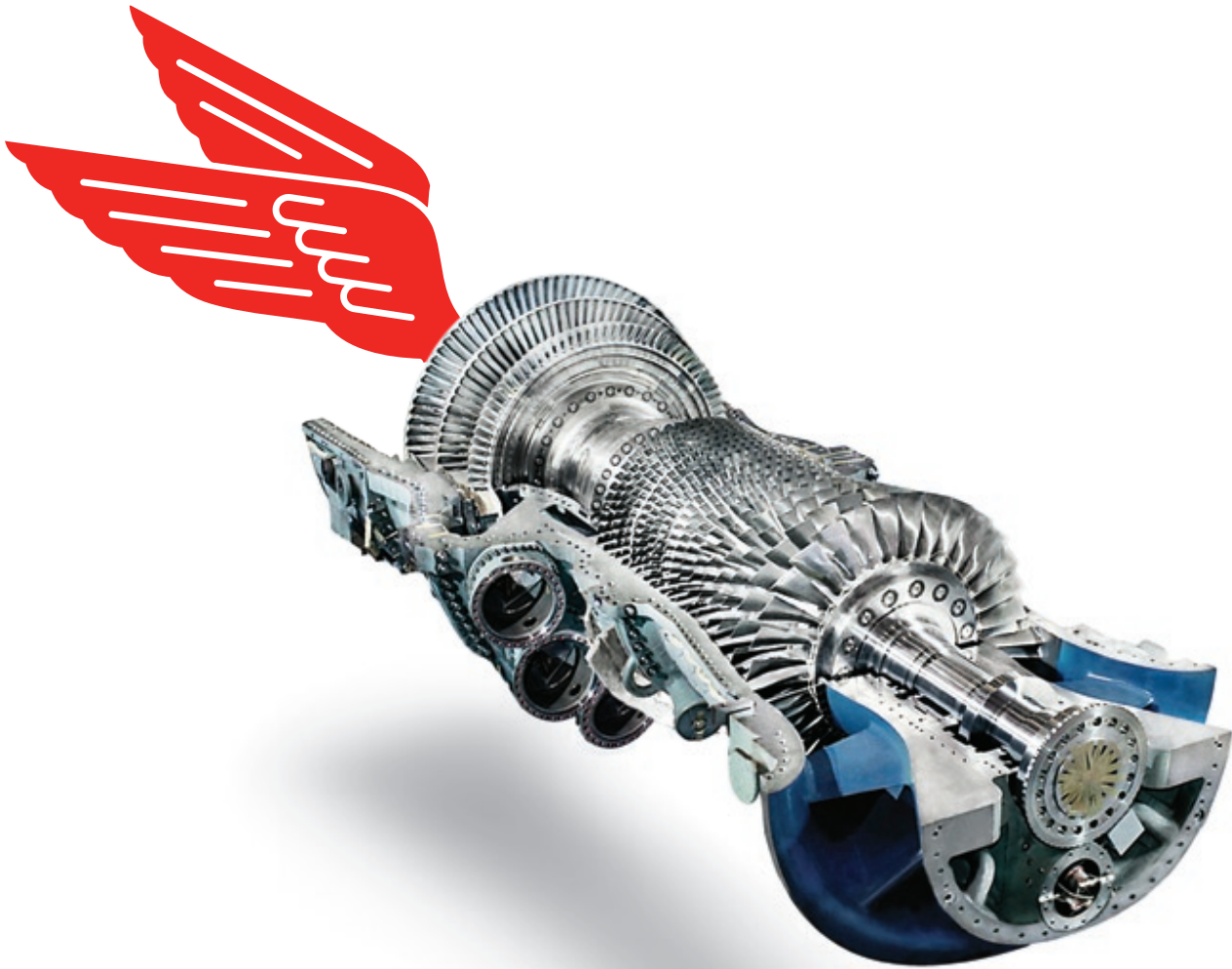
© 2007 Exxon Mobil Corporation

The Mobil and ExxonMobil logotypes, Mobil DTE, Mobil Rarus, Mobil Pyrotec, Mobil SHC Rarus, Mobil Polyrex, Mobil Deltac, and the Pegasus design are trademarks of Exxon Mobil Corporation or one of its subsidiaries. In this document, the term ExxonMobil is used for convenience only and may refer to Exxon Mobil Corporation or one of its affiliates. Nothing in this material is intended to override the corporate separateness of local entities.



Mobil Industrial
Lubricants

Proven performance for power plants
Making power plant turbines fly



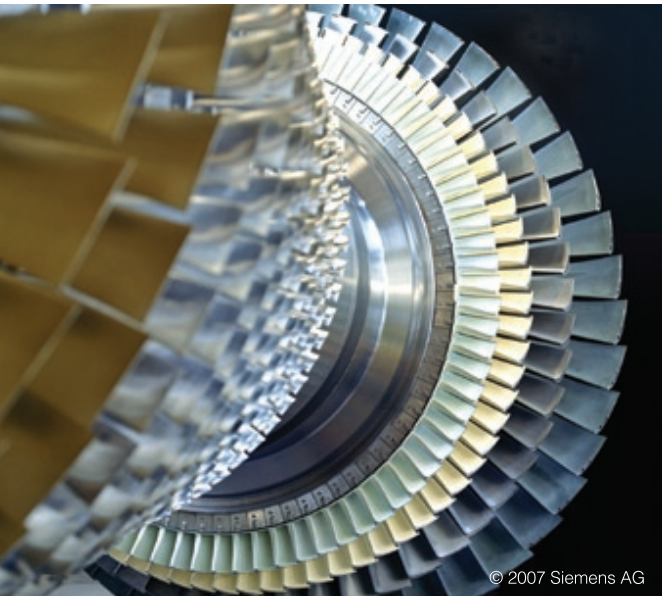
ExxonMobil

Printed in XXX-XXXXX



Increase equipment reliability. Lower operating costs. Extend machine life.

With the wide range of advanced lubricants and expertise from Mobil,
more productivity = more output = more profit.



© 2007 Siemens AG



Increase your plant's productivity through enhanced reliability and uptime, with the help of Mobil industrial lubricants. Formulated to help you get the most out of your equipment, these high-performance lubricants are backed by over 100 years of industry experience and expertise in lubrication. And engineered not simply to make your operation run — but help it fly.

Get peak performance from a global leader in synthetic technology and advanced turbine oils.

Mobil Industrial Lubricants offers a wide range of specially formulated high-performance synthetic lubricants for your critical equipment needs, as well as premium turbine lubricants developed to protect your investment. These include:*

- **Mobil SHC 800 Series** synthetic oils for land-based gas turbines
- **Mobil DTE 800 Series** high-performance oils for gas, steam, and combined-cycle turbines
- **Mobil DTE 700 Series** mineral oils for steam turbines and nongearred gas turbines
- **Mobil Rarus SHC 1020 Series** synthetic oils for booster pumps and air compressors
- **Mobilith SHC Series** synthetic greases for demanding and high-temperature applications
- **Mobil SHC 600 Series** synthetic circulating oils for pumps and other high-temperature applications
- **Mobil Pyrotec HFD 46** synthetic hydraulic fire-resistant governor oil for turbines
- **Mobil Jet Oil II** synthetic turbine oil for stationary aero-derivative gas turbines

Engineered to perform even in demanding conditions — including high temperature, heavy load, and water contamination — these lubricants and greases will help keep your power plants operating in top form.

*Since equipment and operating conditions vary, please refer to the equipment builder manual for final lubrication recommendations.

Supported by unsurpassed industry expertise.

Our highly experienced engineers work closely with customers and leading equipment builders for unique insights into their new technology and lubrication requirements. These insights then help guide our product development process. This gives our research scientists and lubricant formulators the ability to build leading-edge lubricants for the most demanding peak power, gas compression, or captive power applications from the ground up — making them highly effective in the equipment they lubricate. Our knowledgeable Field Engineering Services (FES) team can offer you professional advice on sound lubrication practices, proper lubricant selection, equipment troubleshooting, and other lubrication services that will help you run your plant longer and in top condition.

Backed by extensive builder approvals and proven field performance.

Thoroughly tested before they are commercialized, Mobil industrial lubricants and greases are well supported by equipment builder approvals. For example, the new Mobil DTE 700 Series surpasses 19 industry and equipment builder specifications for gas and steam turbine oils. And the Mobil DTE 800 Series, our top-of-the-line turbine oils, has delivered significant savings for customers through extended oil life.

continued on back page



© 2007 Siemens AG



How we help keep your gas and steam turbine power plant running better — longer.

Proven performance is the foundation of Mobil-branded products — each one formulated to offer outstanding equipment protection and long oil life. These are just a few of our high-performance series for your operation:

1 Turbine

- *Turbine Reservoir* — Mobil SHC 800, Mobil DTE 800, Mobil DTE 700
- *Generator Bearings* — Mobil SHC 800, Mobil DTE 800, Mobil DTE 700
- *EHC System* — Mobil DTE 800, Mobil DTE 700, Mobil Pyrotec HFD 46 (fire-resistant applications)

2 Gas Compressors

- *Compressors* — Mobil SHC 600

3 Steam Loop / Feed Water Pumps

- *Pumps* — Mobil DTE 700, Mobil SHC 600
- *Electric Motors* — Mobil SHC 600, Mobil Polyrex EM, Mobil DTE 700, Mobil DTE Oil Named, Mobilith SHC

4 Cooling Towers

- *Gear Drives* — Mobil SHC 600
- *Electric Motors* — Mobil Polyrex EM

5 Backup Generators / Fire Water Pumps

- *Diesel Engines* — Mobil Delvac 1300 Super, Mobil Delvac 1600

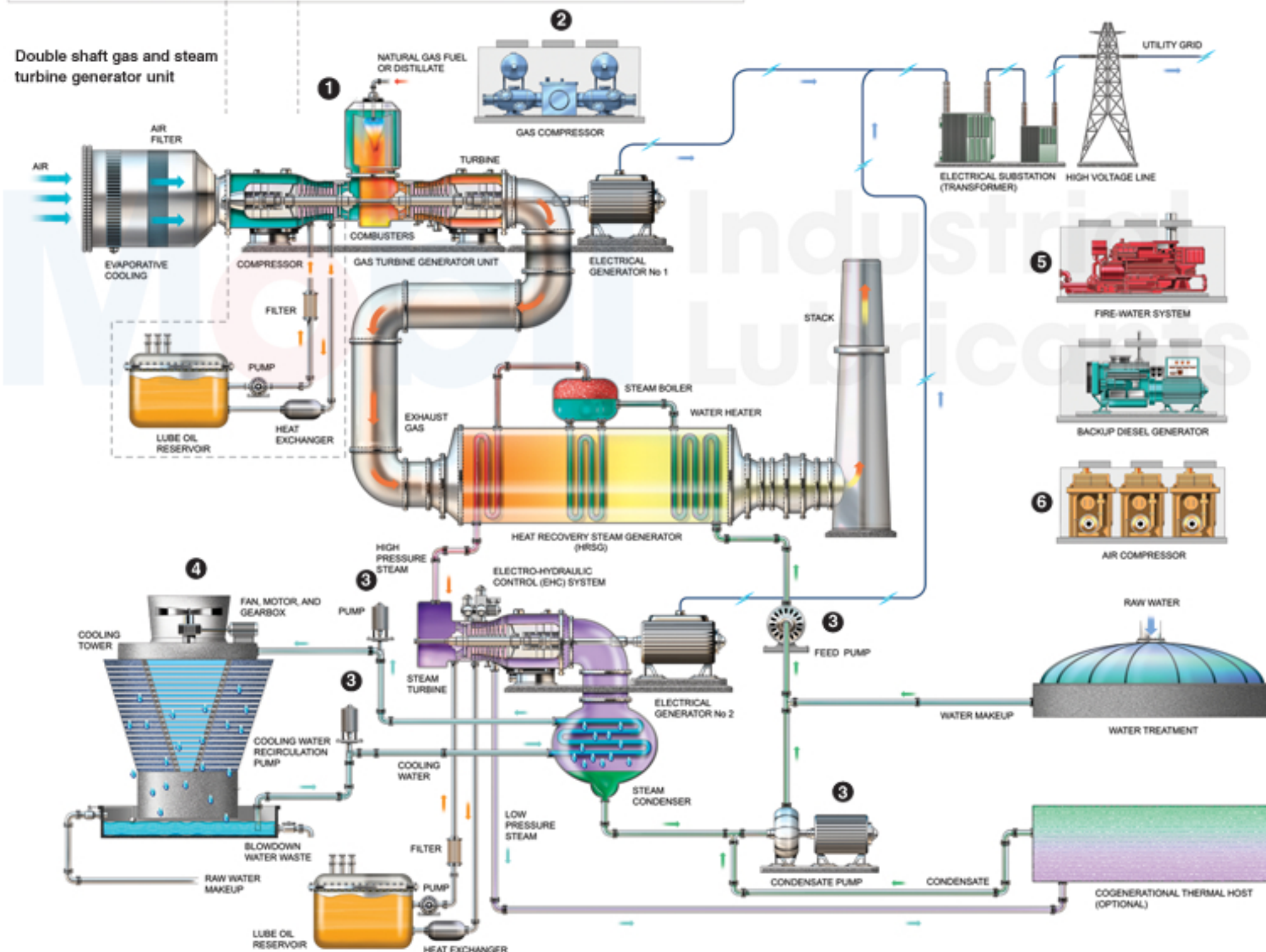
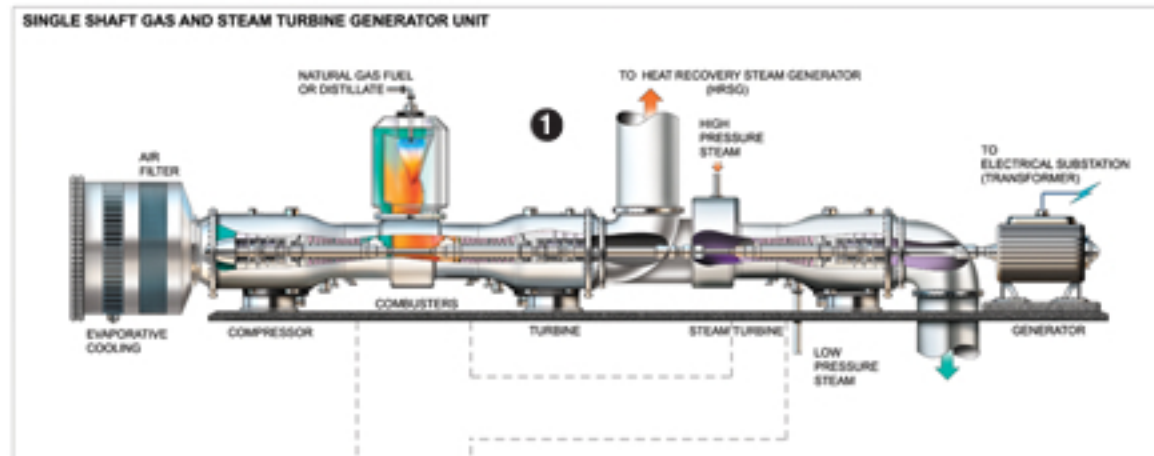
6 Air Compressors

- *Compressors* — Mobil Rarus SHC 1020 (screw), Mobil Rarus 800 (reciprocating)

Miscellaneous (not shown)

- *Forced Draft (FD) Fans* — Mobil SHC 600
- *Induced Draft (ID) Fans* — Mobil SHC 600

Note: Schematic and product recommendations are intended as a general guide only. Products listed are the product series names. Please refer to equipment builder manual for final lubrication recommendations or consult your Mobil Industrial lubricants team for additional products.
NOT TO SCALE.



© 2007 Exxon Mobil Corporation

The Mobil and ExxonMobil logotypes, Mobil DTE, Mobil Rarus, Mobil Pyrotec, Mobil SHC Rarus, Mobil Polyrex, Mobil Delvac, and the Pegasus design are trademarks of Exxon Mobil Corporation or one of its subsidiaries. In this document, the term ExxonMobil is used for convenience only and may refer to Exxon Mobil Corporation or one of its affiliates. Nothing in this material is intended to override the corporate separateness of local entities.

A state-of-the-art used-oil analysis program.

To help you monitor lubricant and equipment condition and increase equipment reliability, Mobil Industrial Lubricants offers an oil analysis program specifically tailored to monitor critical indicators in used oil based on leading equipment builder specifications and international standards. This program is backed by our FES team that can train your personnel to run an effective used-oil analysis program and interpret analysis results.

Our innovative Turbine Commissioning Program makes your job easier.

This comprehensive service helps you prepare your turbine lubrication system and turbine oil for start-up, ensuring timely and reliable operation. To help you meet equipment builder requirements and to begin a comprehensive lubrication program at your new installation, we can offer product recommendations, turbine lubrication system and oil preparation, and additional postcommissioning integrated lubrication services.

OPTIONAL

So team up with Mobil Industrial Lubricants for continually advancing, standard-setting products and services. And take advantage of our leading-edge lubricant technology and unmatched global expertise to help you unleash the productivity of your operation.

For more information on these and other Mobil lubricants and services, call your local company representative or the Mobil technical help line at XXX-XXX-XXXX. Also visit our web site at www.mobilindustrial.com.

